



Quanti-Quote Material Estimation Service.

Designed for Builders Merchants'.

Simplicity Itself.



Trewint, Main St, Shap, Cumbria, CA10 3NH.

Contact Peter Ferguson on Tel :- 01931 716810

Or email Peter@quantiquote.co.uk.

Who we are



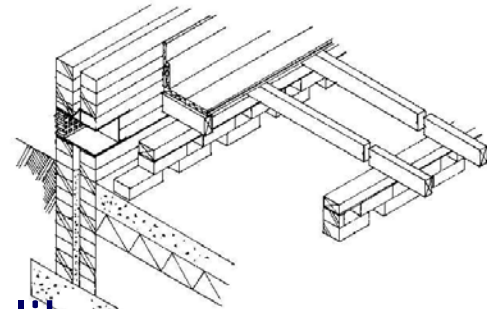
- We are Peter and Carol Ferguson a Partnership
- Formed in 1995.
- Peter has an OND and HND in Building Construction.
- Peter was a Branch Manager in Harcros for 18 years winning the Premier Depot award before starting Quanti-Quote.
- Members of the BMF , UNIMER and Guild of Master Craftsmen.
- In 2001 we took over the rights to Quanti-Mate estimation program which we use.
- In 2001 we fixed as many bugs as possible and re-launched version 11.8.
- By 2003 we had rewritten launched the new windows version of Quanti-Mate.

Quanti-Quote

Incorporating

Quanti-Mate

- Speed - Quotes returned by post within 12 business hours of receipt.
- Saves your precious time.
- Comprehensive Quote.
- Customer friendly layout.
- Well presented quote.
- Perfect for self builds and builders alike.
- Printed on your headed paper.
- Same day service if required.
- Web site and other promotional activities, all enquiries put through participating Merchants.



Quanti-Quote

Incorporating

Quanti-Mate



- Your customer believes his plans are the most important plans you have .
- We help to reinforce this by returning them back to you promptly within 12 business hours of receipt.
- We send them in a well presented layout which you can give straight to your customer.
- ***Unlike others we only trade through Merchants' and will not deal direct with your customer.***
- We know that some of the staff pricing up a quote, may not be familiar with the building process.
- We have guides available to help answer some of the most common asked questions on some of the terminology.

Quanti-Quote
Incorporating
Quanti-Mate

- The program we use, Quanti-Mate, was selected because it gives plenty of detail to be able to price for the building, without listing every nail and screw.
- Like the famous razor company, because we thought it was so good, we bought the program.
- Because it does not go into great depth it helps when pricing by not putting all your cards on the table at once, helping to preserve margins.
- We are one of the few companies who develop and use their own estimating software.



We have and can help with :-

- Point of sale leaflets and posters and guides.
- Masters for Fliers which can be customized for invoices and statement mail outs.
- Web site geared to obtaining leads for you from prospective self builds, all of which are directed to trading Merchants.
- We are Supplier Members of the BMF , United Merchants PLC members , Members of the Guild of Master Craftsmen and Members of the Federation of Master Builders.

Quanti-Quote

Incorporating

Quanti-Mate

It's Simplicity itself .

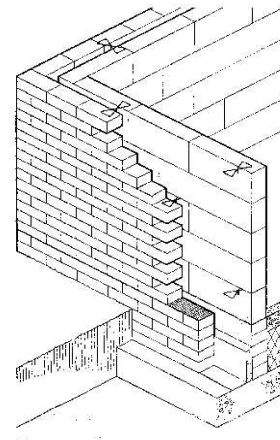
You send us your plans and within 12 business hours from receipt we will send them back to you with a Materials Quote (or fax back same day if required)





Customers including self build award winners:-

- **Jackson Building Centres.**
- **Elliott Brothers Ltd.**
- **Gibbs & Dandy PLC.**
- **MKM Building Supplies.**
- **Buildbase Ltd.**
- **Builders Centers.**



Others include :-

Jewsons Ltd, BMB Builders Merchants, J T Dove, Merton Timber, David Covers Ltd, Howarth Timber Ltd to name but a few.

Your Next Steps.



It's simplicity itself .

You send us your plans and within 12 business hours from receipt we will send them back to you with a Materials Quote (or fax back same day if required)

We need :-

- Floor Plans for each floor.
- Elevation drawings.
- An Order Number if required.
- A compliments slip with contact name in case of queries.
- About 10 sheet of headed paper if you require it on your own paper.
- Please ensure you put enough stamps on (usually more than 1st class letter rate).