



Quanti-Mate Professional Edition Material Estimation Software.

Designed specifically for the Building Industry.

Simplicity Itself.

Trewint, Main St, Shap, Cumbria, CA10 3NH.

Contact Peter Ferguson on Tel :- 01931 716810

Or email Peter@quantiquote.co.uk.

Who we are



- We are Peter and Carol Ferguson a Partnership
- Formed in 1995.
- Peter has an OND and HND in Building Construction.
- Peter was a Branch Manager in Harcros for 18 years winning the Premier depot award twice before starting Quanti-Quote.
- Members of the BMF , UNIMER and Guild of Master Craftsmen.
- In 2001 we took over the rights to Quanti-Mate Estimation Software which we use.
- In 2001 we fixed as many bugs as possible and re-launched version 11.8.
- By 2003 we had rewritten and launched the new windows version of Quanti-Mate.

Quanti-Quote

Incorporating

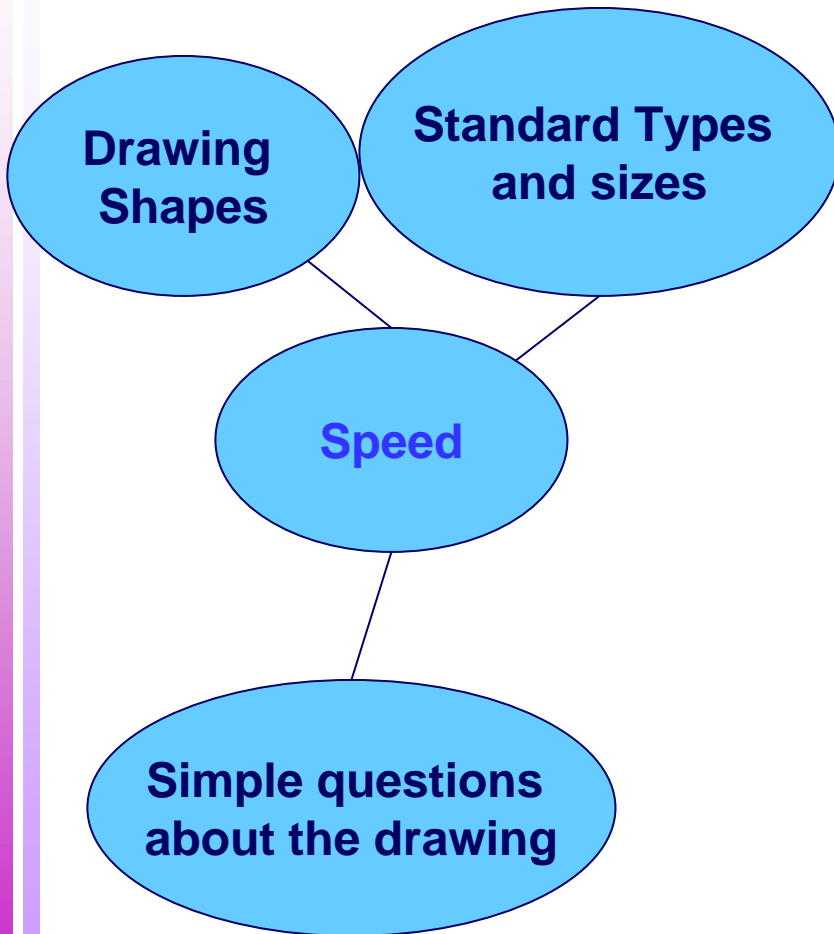
Quanti-Mate

- Designed to be quick and simple to use. You don't need a degree in Quantity Surveying, only the very basic knowledge of building.
- Unlike other programs, Quanti-Mate was specifically written for the building industry and not for a broad spread of industries.
- Most estimation programs work on quantity surveying and Standard Method of Measurements principles, using databases or spreadsheets.
- Quanti-Mate broke the rules and simplified the process .

Quanti-Quote

Incorporating

Quanti-Mate



- Quanti-Mate uses standard drawing shapes to build up the estimate.
- Presents the user with simple set of questions about the drawing.
- Guides the user through with clear questions and concept sensitive help files.
- Quanti-Mate thinks unlike spreadsheet and database type programs. Quanti-Mate checks the dimensions to ensure they are logical and reasonable.
- Designed to be quick, a simple 4 bedroom house can be done in under 45 minutes.

Quanti-Quote
Incorporating
Quanti-Mate

- Quanti-Mate uses standard types, sizes and quantities of common materials using generic descriptions.
- Thereby specifying material to be consistent with current building codes and practices.
- Allowing a realistic quote to be quickly done from either no more than a sketch or from fully specified drawings.



Quanti-Mate does all the hard work for you

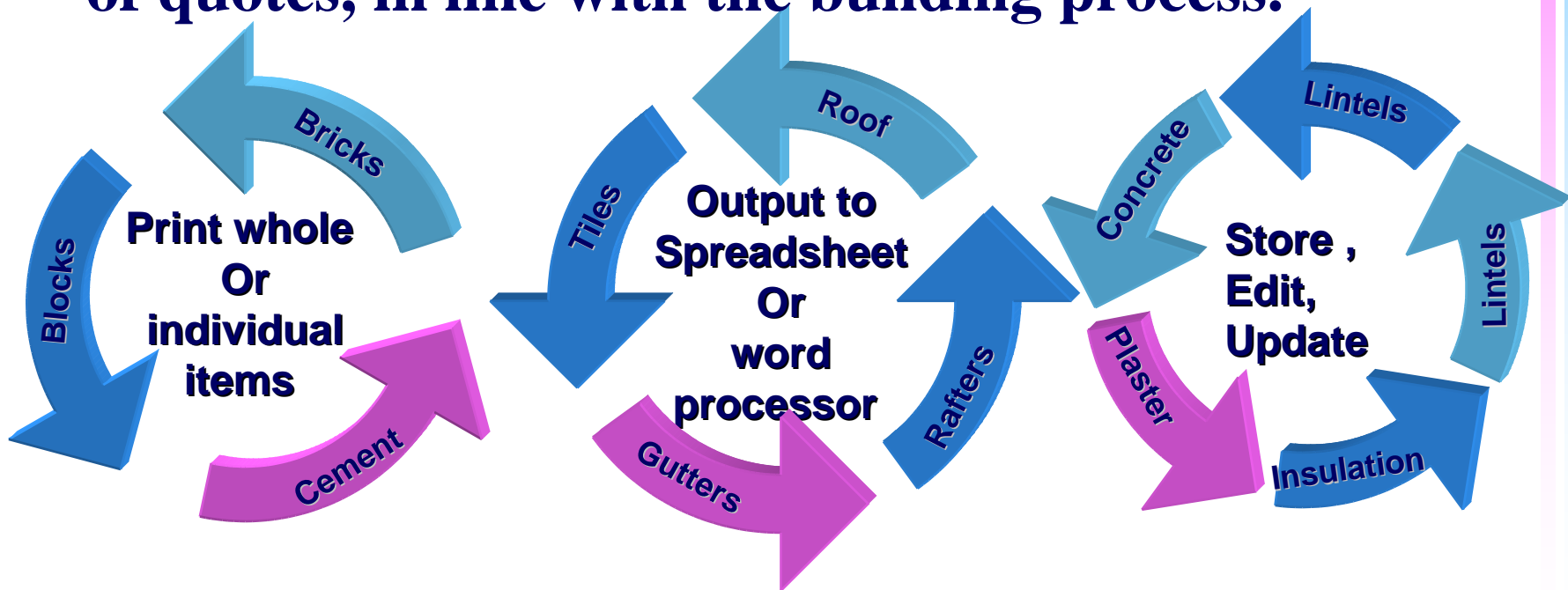
- Doing all the calculations for you, unlike most other programs where you have to measure and work out the areas of walls and roofs etc.
- In Quanti-Mate you enter the external measurements, internal room and window sizes plus joists particulars only. Quanti-Mate then by advanced mathematics works out the rest including roof materials, bricks ,blocks, concrete, roof tiles, timbers etc.
- It allows for adequate (adjustable) allowances for expected wastage of appropriate materials such as cement.

Quanti-Quote

Incorporating

Quanti-Mate

Quanti-Mate presents quantities and descriptions in a clear, simple but flexible manner that facilitates pricing and presentation of quotes, in line with the building process.



What can Quanti-Mate do?
Quanti-Mate will be calculated
for the following types



Foundations:-

Excavations, concrete / on site mix, mesh, clay boards, strip or trench type, up to 3 different sizes external and 3 internal, backfill.

Floor slab:-

Concrete/ on site mix, mesh, polythene/ radon protection/ membrane liquid, hardcore, blinding.

Floor option:-

Block and beam (ground or first floor), screeded, floating chipboard or PT & G, joisted SC4 or TJI, chipboard or PT&G, floor insulation, perimeter insulation, netlon, separation layer.

Walls:-

Brick, block render, stone, hanging tiles, hanging slate, insulating block, internal partition blocks, timber frame either site made or manufactured full kit or part, cavity wall, solid wall, half brick thick wall, Cavity insulation, wall ties, cavity closers, Dpc, render, lintels, cills, heads, sand, cement, masonry cement, sole plate anchors, air bricks, cavity liners, foundation blocks, trench blocks, plaster, dry lining plasterboard/thermal board, fibre tape, dry lined battens, starter profiles, garage door frame, door frame, flue liners, gas flue liners.

Quanti-Mate does the calculations for you.



Roof :-

Flat, lean too, pitched (either equal pitch, unequal pitch or unequal height), gable end, hip, double hip, cropped hip, dutch hip, tiles, felt, battens, ridge, counter battens, counter batten, warm roof, sarking ply/ t & g, dormers (with hanging tiles, hanging slate, timber boarding, lead, brick, render) tile vents, lead valleys, valley tiles, lead flashing, cavity trays, eaves vents, undercloaks, hip tiles, bonnet hips, dormers.

Joists:-

Timbers, joist hangers, straps, noggins, herringbone, metal/ timber solid blocking, acoustic insulation

Roof Timbers:-

Trusses, truss clips, bracing, straps, cut roof, wall plate, rafters, purlins, binders, collars, struts/ hangers, barge board, fascia, hip boards, valley boards, lay boards, firings, arris, roof decking, flat roof felt, chippings, adhesive/ bitumen, primer, soffit strip, soffit vent.

Ist Fix:-

Windows, timber cills, external door frames, door liners and fire door frames, studs timber/ metal Stud insulation, chipboard/ PT&G boards, edge and plasterboard noggins, plasterboards, cove and adhesive, stairs, garage doors, skilling insulation, loft insulation, garage ceiling fire boards, garage ceiling insulation, loft hatch.

Quanti-Mate can
do all this and more.



2nd Fix:-

Internal doors, fire doors, cupboard doors, door furniture, architrave, skirting, loft hatch, pipe casing, bath framing.

Guttering:-

Sanitary ware:-

Generic outlines for appropriate rooms.

Central heating:-

KW requirement for each room with a generic profile for a traditional heating system.

Quanti-Mate will do:-

Full Houses, part houses, extensions, conversions, conservatories, semi detached houses, terraces, detached garages, attached garages and porches.

Single storey , two storey, three storey, chalet and cottage.

Output to: printer , spreadsheet, word processor, with/ without prices or units or product codes.

What Next ?

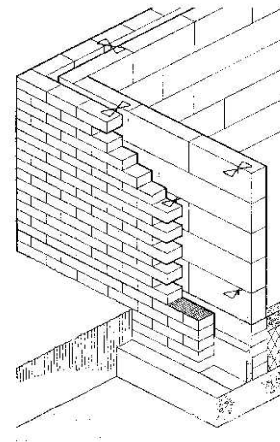


- Most of our existing customers use both the software program and our estimation service in tandem , thereby getting the most flexibility from both.
- In busy or short staffed times, as long as the software is kept up to date , we can do the plans and email you the files for you to process on your system.
- There are plans to add new modules to expand and develop the Quanti-Mate program and link into other programs for more flexibility.
- For more information please contact Peter Ferguson on Tel 01931 716810



Builders Merchants' Users including :-

- Joseph Parr (Middlesborough).
- Robert Price (BM) Ltd .
- Ridgeons Ltd .
- Blanchfords & Co Ltd.
- Towcester Building Supplies .
- Chas Lowe & Sons(BM) Ltd.
- Hale & Co (Drybrook)Ltd.
- Hardleys Timber & Building Supplies.
- John A Stephens Ltd.



Others include :-Aizlewoods Building Materials, Oreton Building Supplies, Murdock Building Supplies, PBM Ltd, Parker Building Supplies, Simmons Of Mansfield,UGS Ltd to name a few.

Most take advantage of our estimation service when busy or holiday times.



We are always adding to our system and since doing this presentation we have added in the following additions.

- Mansard Roofs
- Underground drainage.
- A range of plasterboard to different floors and stud walls.
- Electrics
- Plumbing
- Heating pipes and fittings.